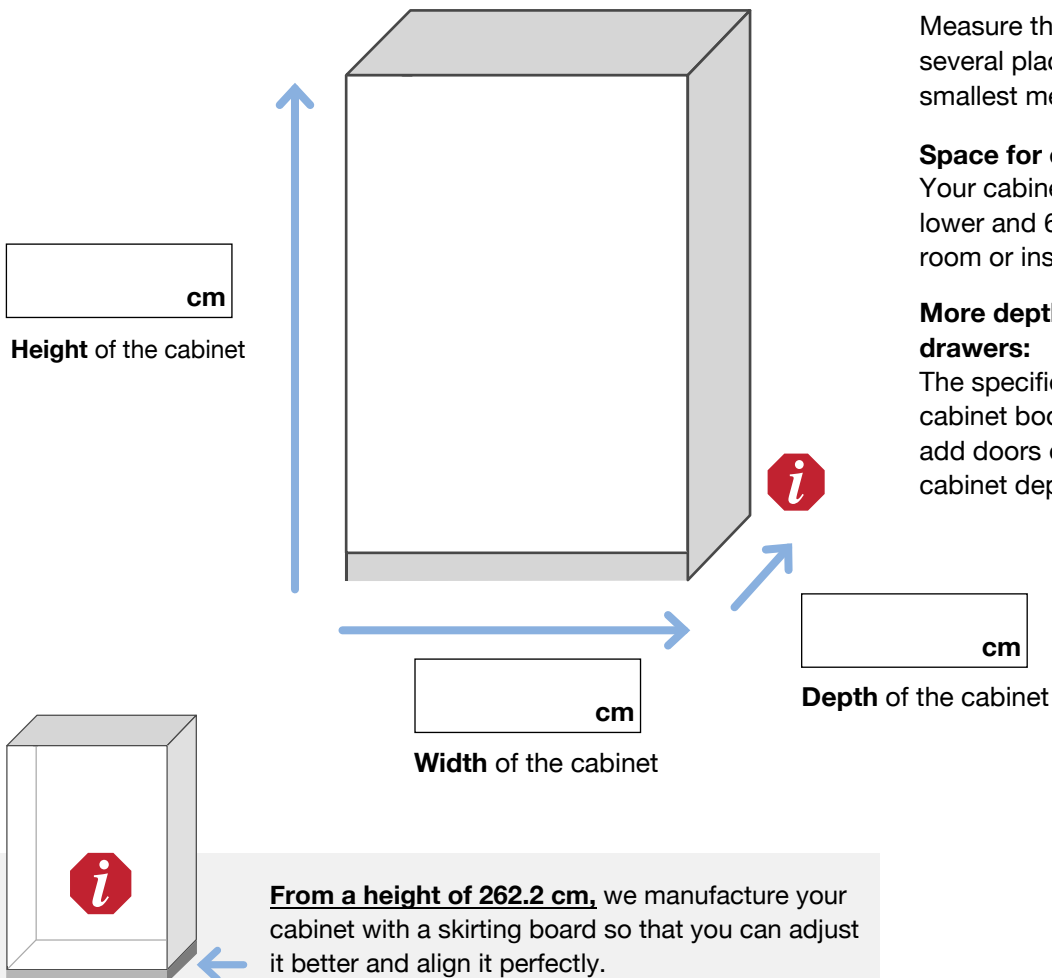


Measurement instruction: Cabinet without slant

Step 1:

Enter the measurements (cm) in the corresponding boxes.



Required tools:

Tape measure or folding ruler, pen, and the printed measurement guide.

How to measure correctly:

Measure the height and width in several places and always take the smallest measurement.

Space for easy installation:

Your cabinet must be at least 3 cm lower and 6 cm narrower than the room or installation niche.

More depth due to doors and front drawers:

The specified depth refers to the cabinet body. If you are planning to add doors or front drawers, the cabinet depth will increase by 2 cm.

Step 2:

After measuring, you can quickly and easily enter the data into the cabinet configurator at <https://www.Furnfab.com/en/products-cabinets>.

Need help?

If you have any questions, our team is happy to assist you!

You can easily and quickly reach us via e-mail, through our website, or by phone:

E-mail: service@furnfab.com

Contact form: <https://www.furnfab.com/en/contact>

Phone: +44 (0) 131 608 34 77